

**WILDLIFE
& WE**



Let's have better tomorrow!
Wildlife & We Protection Foundation

Wildlife & We Protection Foundation

2011-2012

Wildlife and We Protection Foundation

Regd Office: Shalimar Industrial Estate, Dayat, Dayat Falia Road, Amla, Silvassa, 396230
UT of Dadra Nagar Haveli.

National Coordination Office: B-507,508, Nilgiri Upvan Apartment, Gawand Baug,
Pokhran-2, Thane (West).

Message from the Director Mr Divyang Chauhan

Hello All,

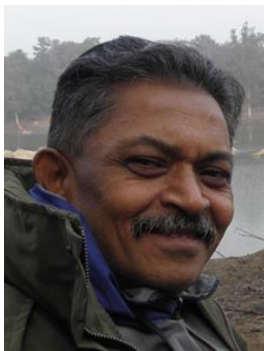
In these three years of our existence, we have completed several projects of spatial mapping and have diversified our services.

Forest degradation is the long-term reduction in the overall capacity of a forest to produce or provide benefits, such as carbon storage, biodiversity, wood, and other products due to environmental and anthropogenic alterations. It results to a decrease in the number of species in the forest and in tree cover, or the alteration of the forest structure. Forest degradation creates great ecological problems in all parts of the earth, the most significant impact of which is the loss of habitat of many species or loss of biodiversity. It also leads to the disruption of water cycle and river ecosystems, and soil erosion. It's time we take steps towards retarding this degradation and help in increasing the forest cover so that the ecological cycles can be restored. I welcome two new colleagues Ms Kalpana Chinchkede and Ms Pranoti Joshi to our team.**Divyang Chauhan**



Message from the Chief Executive Officer – Dr. Shivaji Chavan

Hi All,



Climate change is already beginning to transform life on Earth. Around the globe, seasons are shifting, temperatures are climbing and sea levels are rising. And meanwhile, our planet must still supply us – and all living things – with air, water, food and safe places to live. The most evident effect of climate change is rising temperature. Some regions will experience more extreme heat while others may cool slightly which will result in flooding, drought and intense summer heat. Violent storms and other extreme weather events could also result from the increased energy stored in our warming atmosphere. One of the most serious impacts of climate change is how it will affect water resources around the world. Water is intimately tied to other resource and social issues such as food supply, health, industry, transportation and ecosystem integrity.

If we don't act now, climate change will rapidly alter the lands and waters we all depend upon for survival, leaving our children and grandchildren with a very different world.....**Dr. Shivaji Chavan**

Vision

‘A better tomorrow for all by striving for harmony amongst environment and people by promoting integrated solutions to conservation oriented development

Goal

Forest, Wildlife and Environmental Managers as technocrats making optimum use of the available technology for immediate and long term measures for conservation.

Our Objectives

- ✦ To protect and conserve the wildlife in India and in other part of world by bringing awareness amongst the people by holding programmes, conferences, seminars for better coexistence with humans.
- ✦ To provide legal, social, environmental and any and all sort of consultation for protection, conservation, awareness and well-being of wildlife in India.
- ✦ To provide schemes for Animal Life Insurance, Animal Health Care and for the purpose run educational institutions, schools, colleges, hospitals. ‘

About Us

Wildlife and We Protection Foundation was registered under The Companies Act 1956, section 25 as NGO on Date 27th May 2008. Our Approach has been Ecological Restoration, Institutions in Local Self – governance, Conservation and Livelihoods and Efforts at Landscape Level

Our Specialised Services Offered

1. Conservation Oriented Development Services

- ✦ Spatial Digital Planning and Management Support Systems for Protected Areas, Managed Forests, Wildlife Corridors and District and Other Specialised Planning Agencies
- ✦ Development of Interpretation Centres, Nature Trails and Environmental Awareness Material and Wetlands Centres.
- ✦ Conducting Specialised Environmental Studies
- ✦ Ecosystem Assessments (Local, Regional, State and National)
- ✦ Conducting Environment Impact Assessment Studies
- ✦ Facilitation and Consultation related to Government Environmental Clearance for Developmental Projects based on sound scientific footing of 'Conservation Oriented Development.
- ✦ Hardware and Software Planning for Sustainable Ecotourism/ Rural Tourism and Tourism in general
- ✦ Promotion of 'Green Buildings' through Low Cost Interventions.
- ✦ Spatial Digital Planning and Management Support Systems for Disaster Mitigation and Emergency Management.
- ✦ Facilitation in Implementation of Forest Rights Act
- ✦ Capacity Building Programs in Applications of Modern Tools and Technology in Resource Management and 'Conservation Oriented Infrastructural Development, Wildlife Crime Prevention, Wildlife Health, Wildlife Forensics, Wildlife Rescue Operations, Field Based Studies.
- ✦ Drafting of 'Conservation Plans' and Technical Inputs in Working Plans
- ✦ Conduction of Floral and Faunal Surveys
- ✦ Research in Environmental Issues, Natural Resource Management and Social Geography
- ✦ Advice in Wild Animal Human Conflict and Rescue Operations
- ✦ Capacity of Corporate Sector in Environmental Issues, CSR Investments, Environment Impact Assessment and Sustainability in Business (Collaboration University of Wales, Bangor, UK)

2. Our Domain of Activities related to Rural Integrated Planning

- ✦ Evolving, Planning, Developing and testing Models for Integrated Development with site specific perspective.

- ✦ Rural Integrated “Conservation- Oriented-Developmental Planning, development of Implementation Strategy and Monitoring Protocols.
 - ✦ Aiming at Dependency-Reduction of Communities crucial for conservation of natural resources through the Public Private Community Partnerships(PPCP)
- 3. Planning, Development, Management, Implementation and Monitoring of CSR**
- ✦ Conservation Oriented Planning in Education Sector- Education for Sustainable Development to promote Sustainable Living- An Initiative being Planned with the experts and consultants from Sweden.
 - ✦ Technical Support in Infrastructural Planning and Location Based Services for Health and Infrastructural Development through development of Digital Planning and Management Support System.
 - ✦ Capacity and Competency Building Programs for Planners, Managers, Implementers and Monitoring Agencies dealing in Corporate Social Responsibility.
 - ✦ Capacity and Competency Building for Planning and Implementation Livelihood programs and their up-scaling to ensure Conservation Oriented Development.
 - ✦ Providing Integrated Solutions for Conservation Oriented Development in various sectors, themes and disciplines of Environmental Conservation vis-à-vis Corporate Social Responsibility.
 - ✦ Promotion and Facilitation of Public Private Community Partnerships
- 4. Our Capacity Building Programs for Forest Department**
- ✦ Frontline Staff- Continuous Participatory Capacity Building Program Course (PPT)- Four One Week Courses over Two Years with a One Week Course every six months
 - ✦ Course on Applications of Modern Tools and Technology in Natural Resource Planning, Management and Monitoring.(Three Days)
 - ✦ One Day Crash Course for Middle Level Executives in Applications of Forensic Sciences in Wildlife Management
 - ✦ One Day Course of Practical Aspects Implementation of Environmental Laws
 - ✦ Two Days Capsule Course in Non-Timber Forest Produce Identification, Natural and Artificial Propagation, Maintenance, Value Addition and Development of Forward and Backward Linkages.

Five Week Course in Forest and Wildlife Management and allied issues and spaced out with intervening six month gap in which 'On-Job-Assignments' are allocated to Frontline Staff The Five One Week

Our Approach

- ✦ Ecological Restoration
- ✦ Institutions in Local Self – governance
- ✦ Conservation and Livelihoods
- ✦ Efforts at Landscape Level
- ✦ Promote Conservation Oriented Development

Our Progress

- ✦ Learning Processes
- ✦ Mapping Community Efforts in Conservation
- ✦ Interaction on Policy
- ✦ Planning and Management of Natural Resources

Highlights

The major focus of the organisation, this year has been on development of 'Conceptual Plans' for Interpretative Facilities for the Forest Department of Maharashtra and the Chhattisgarh Tourism Board. An innovative task of developing fire Prevention and protection database was taken up in Tungareshwar Wildlife Sanctuary and Sanjay Gandhi National Park. This eventually reduced fire incidences drastically. The other major achievement was generation of Spatial Database for entire Thane Forest Circle in the GIS Domain. The complete Thane Forest Circle was mapped for the first time.

Brief Overview of our Projects

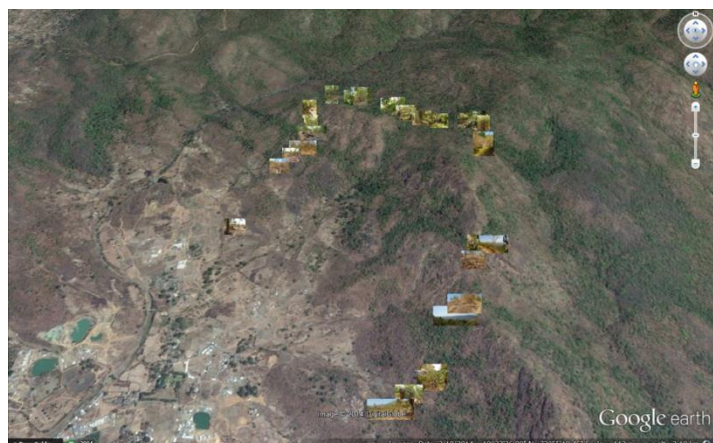
1. Fire Protection and Prevention Database Generation



Fires in our forests are either deliberate or accidental. If fire is detected in the morning, the fire-fighting team can very well reach the spot and take steps to extinguish the fire. However, if the fire is spotted in late evening or night it is extremely difficult firstly to mobilise staff and secondly to reach the spot as the

paths are sometimes not visible in the night. Most of the times it takes a long time to reach the spot and the destruction by fire is much more than expected.

Our organisation developed this database was developed to assist the department in tackling fires promptly. All the path tracks, footpaths and cart tracks in an area were mapped using GPS. Tree on these tracks were marked using band of fluorescent paint. These fluorescent bands were marked in such a manner that at every point of time one band would be visible, even in darkness. This would facilitate the staff and labourers to keep on track. Once the fire is spotted, the GIS Database will help identify the shortest route to the fire location and with the help of the markers the fire will be accessed with ease. In order to



understand the habitat element, GPS Geotagged photographs were also taken while the tracks were being marked

2. Interpretation and Conservation Support to Forest Department of Maharashtra

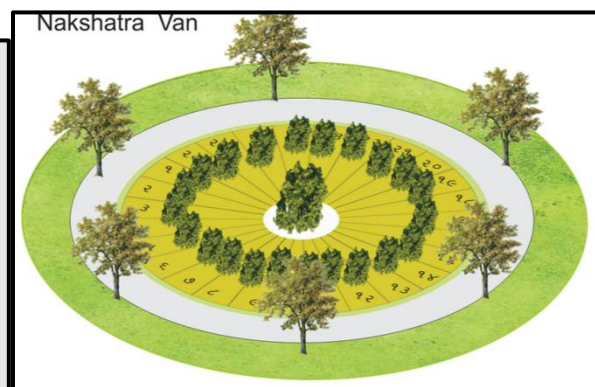
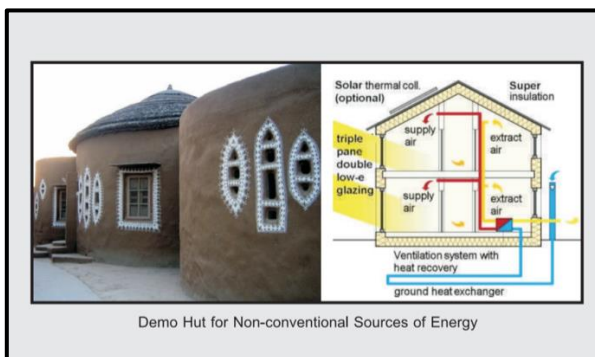
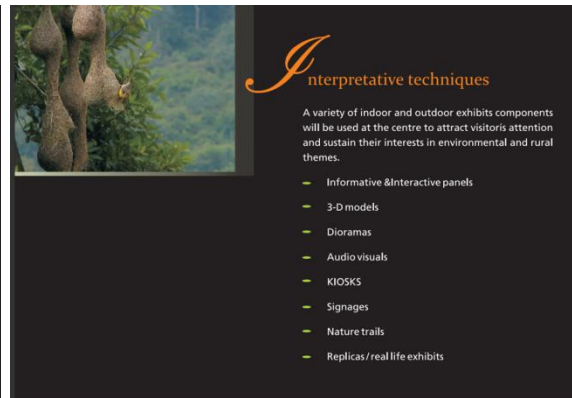
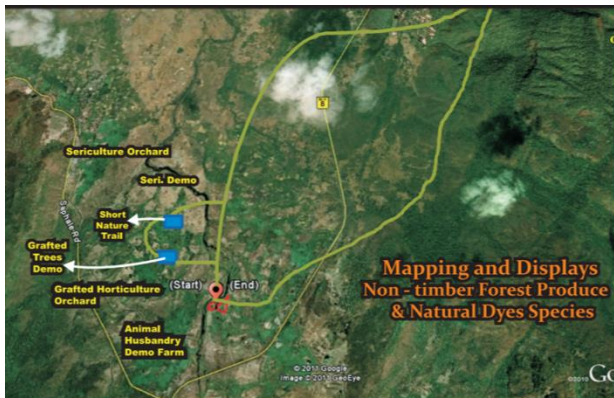
An interpretation centre, interpretive centre, or visitor interpretive centre is an



institution for dissemination of knowledge of natural or cultural heritage. Interpretation centres are a kind of new-style museum, often associated with visitor centres or eco-museums, and located in connection to cultural, historic or natural sites.

The Conceptual Design for Interpretation and Conservation Support was developed

by our organisation for the Forest Department of Maharashtra at Sativali, Dahanu. Given below are some of the highlights of the design.



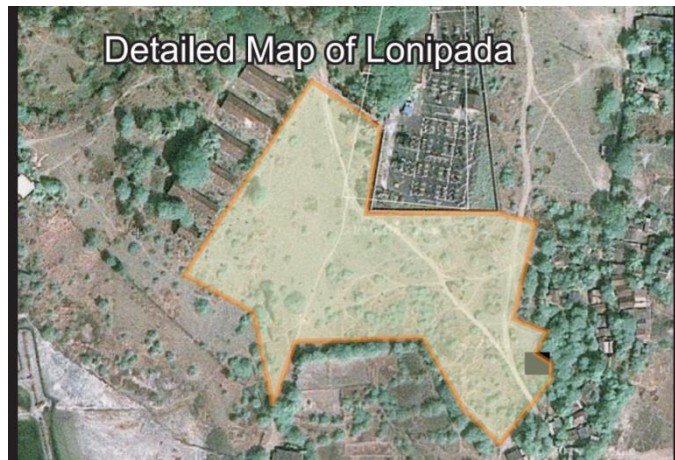


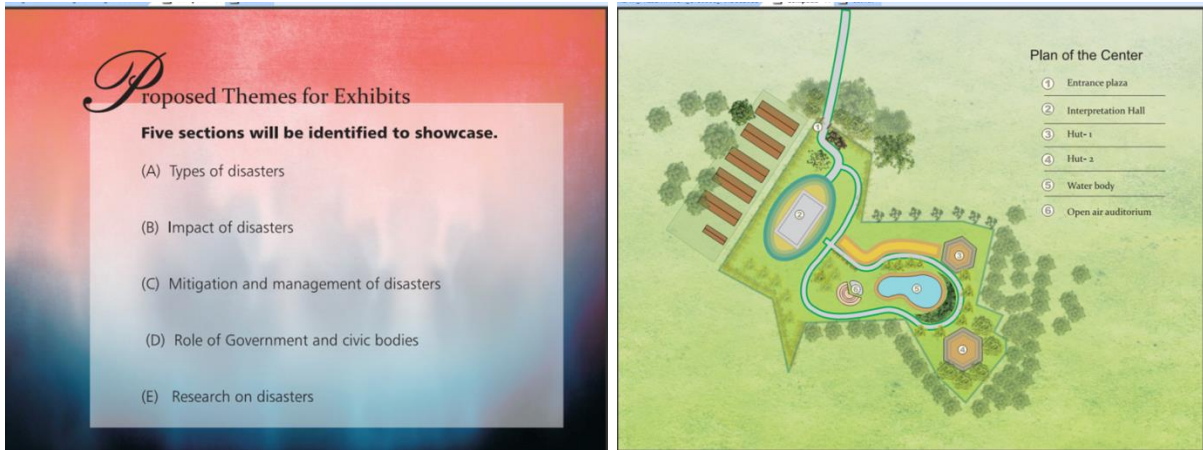
3. Conceptual Design- Lonipada Disaster Management

On the request from the Department of Social Forestry for the first time in this regional 'Design for Interpretation Center for Disaster Management' was conceptualized.

The Objectives were-

- Generating awareness amongst masses on following issues
- Types of Disasters
- Impacts of Disasters
- Disaster Preparedness and Management and Mitigation of Disasters
- Role of Government and Civic Bodies
- Research of Disasters





4. Conceptual Design- Nahur Interpretation Centre

This particular site is under the jurisdiction of the Forest Department (Social Forestry Division, Thane) It is in the mid of the city and is adjacent to the highway. It was conceptualized in order to target the city audience and the children who do have to travel long distance to see the ‘Interpretation Centre’

The Objectives were-

- i. To address conservation awareness needs of the city dwellers with least possible difficulty.
- ii. To screen short films for the audience.
- iii. To encourage people and children to participate in the Social Forestry activities



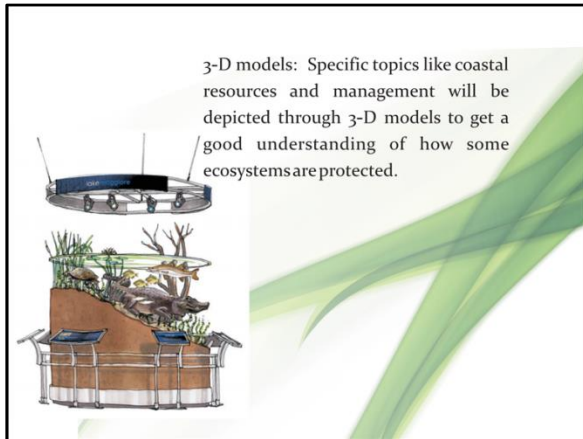
5. Conceptual Design- Information and Nature Interpretation Centre, Collectorate, Thane

The concept was developed for the Social Forestry Department of Maharashtra on the request of the District Collector, Thane.

The Objective were:

1. To create awareness related to conservation of natural resources
2. To take an opportunity to address target groups which come from all over the district for various works in the Collectorate.
3. To cater of young generation through vocational opportunities

Some of the highlights of various themes at the interpretation center are:



Conservation of Natural Resources


- What are natural resources?
- Role of natural resources in our lives
- Impact on natural resources and threats
- Conservation of natural resources

Sustainable Living

- Living in harmony with Nature
- Role of forests, wildlife and environment
- Carry capacity of the Earth

Water

- Scarcity of water
- Conservation of water resources
- Traditional and modern ways of preserving water



Green Messages

This section will have short write ups about environmental issues followed by memorable quotes. Visitors will carry with them these powerful messages and hopefully will stay with them and remembered during their daily lives. Some examples are as follows:

Modern technology, Owes ecology, An apology - Alan M. Eddison

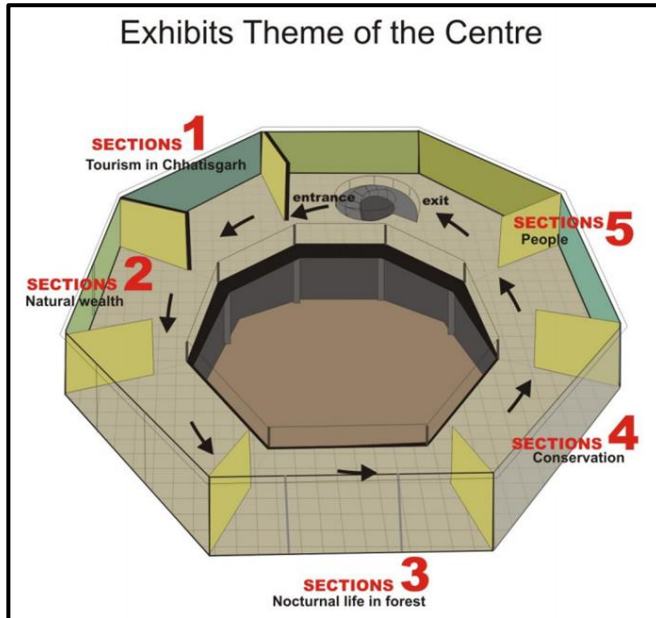
They kill good trees to put out bad newspapers. - James G. Watt (Newsweek, 8 Mar 1982)

Role of individuals in environmental protection

- How can one get involved in saving water, energy and preventing air pollution
- Role of markets in over-consumption of goods
- Caring for environment in daily lives
- Role of NGOs and civil societies

6. Chhattisgarh Tourism Board

The Wildlife and We Protection Foundation was appointed as a consultant for development of Ecotourism Facilities in Chhattisgarh for 2 years. Recently it has been appointed afresh for one year as a consultant.



During its previous tenure as a consultant the Wildlife and We Protection Foundation developed a Detailed Project Report (DPR) for development of an Interpretation Centre at Chitrakoot Waterfall Site. The second major task which was undertaken for development of a Detailed Project Report was 'Upstream Development of Chitrakoot and the Tirathgarh Waterfalls' to promote tourism and ensure proper ecological maintenance

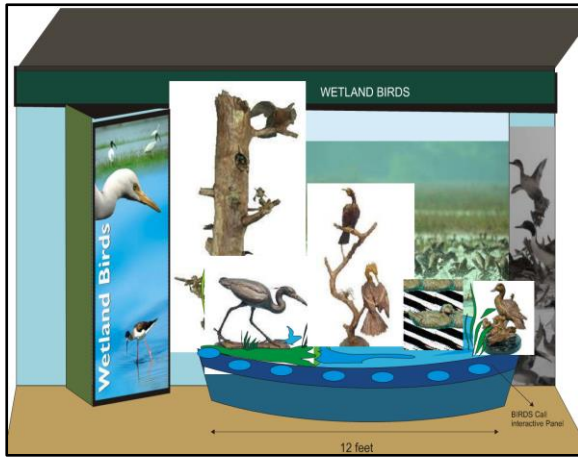
of the two rivers. The concept has been approved but the project awaits commissioning. Some of the snapshots of the projects are as follows:

Objectives

- To inform the visitors about Chhattisgarh's natural wealth (wildlife, protected areas and conservation).
- To display the richness of cultural heritage (tribal culture, farm activities, metallurgy)
- To exhibit information about people, forests and forest use.
- To display information about their mythology, songs and dances.
- To help visitors to understand the problems facing them as development reached their land.



Unlike traditional museums, interpretation centres do not usually aim to collect, conserve and study objects; they are specialized institutions for communicating the significance and meaning of heritage. They work to educate and raise awareness

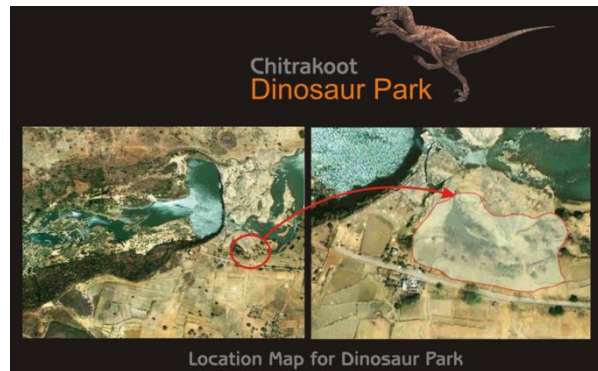


7. Upstream Tourism Development at Chitrakoot and Tirathgarh Waterfalls

The tourism sector needs to address two critical needs for the Chitrakoot and Tirathgarh region: (i) to improve management and land use practices in watersheds, and (ii) to assure the sustainability of the region’s important tourism sector. These needs are linked, since activities occurring in upper watersheds impact on the quality of tourism assets downstream, whether they are hotels, resorts, interpretative facilities or mountain waterfalls. The tourism industry thus, needs to have a clear interest in supporting improved watershed management.

The Objectives of Tourism Project

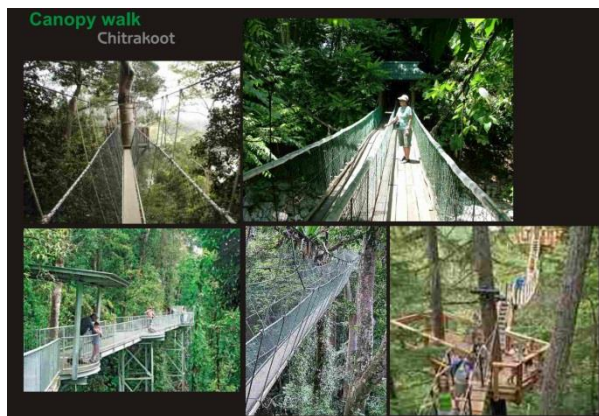
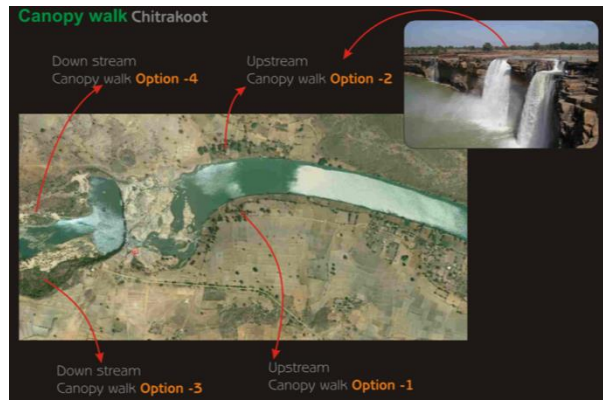
- To identify ways that the tourism sector can improve its contribution towards the management of watersheds by upstream stakeholders; and



- To create or enhance linkages between downstream tourism industry stakeholders and upstream watershed management stakeholders that result in better watershed management practices at selected sites.
- To enhance Tourism Potential

Scoping

- Clearly identifiable impacts from upstream activities on downstream tourism assets;
- A preliminary list of downstream and upstream stakeholders; and other stakeholders
- The resources available to support local participation.



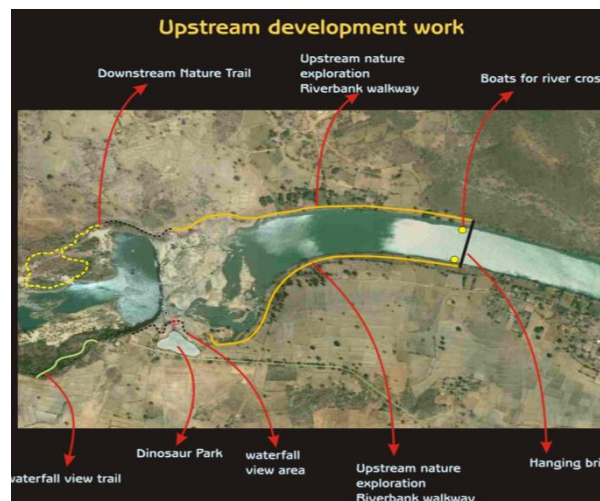
Action Points

- Begin a process of stakeholder identification and analysis, in Chitrakoot and Tirathgarh Watersheds, to identify current roles and responsibilities in watershed management and benefits from watershed services.
- Map the current institutional structure, including the players, the relationships among them, and the relevant policies and legislation impacting on watershed management in Chitrakoot and Tirathgarh.
- Identify existing and potential watershed management actions that protect watershed services and minimise negative impacts on downstream tourism assets.
- Identify sources of information for valuing these services for the downstream tourism beneficiaries.

Probable Key Issues Identified

Key Watershed Services in Chitrakoot and Tirathgarh identified primarily were:

- i. Erosion control
- ii. Flow regulation
- iii. Water quality and quantity
- iv. Biodiversity
- v. Landscape beauty





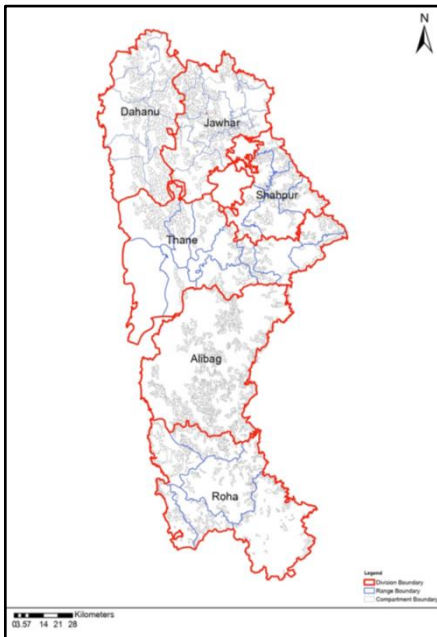
Issues Identified during Fieldwork

During Preliminary Field Work identified key issues for watershed management in these areas were as follows

- i. Upper watershed
- ii. Middle Watershed
- iii. Lower Watershed



8. Spatial Database Generation for Thane Circle



This was one of the commendable achievements of our organisation. Spatial mapping was planned for all five divisions of Thane Forest Circle. These divisions are Alibaug, Roha, Dahanu, Jawahar and Shahpur. The Forest Department floated a tender and our organisation competed and procured this contract. The work was completed by September, 2012 and submitted to the respective divisions. This was a step towards inculcating the sense of use of modern tools and technology in forest management

9. Environment Impact Assessment for The Anik Panjarpole Link Road, Eastern Freeway

The Anik Panjarpole Link Road, Eastern Freeway is a project that envisages the transfer of Forest Land of 4.72 hectares at Mahul creek. It is a project which seems to be extremely essential for Mumbaikars since it is expected to reduce traffic condition and enable plying to work place towards South Mumbai at facilitated and enhanced speed and viable time frame. However the project passes through the mangrove area for 350 meters, 55 meters over CRZ I and 290 meters over CRZ II, the Mumbai Metropolitan Region Development Authority to have given due consideration to mangrove by elevating the entire road above pillars over the mangrove forest land. Our organisation was commissioned by the Maharashtra Metropolitan Region Development Authority (MMRDA) to conduct an EIA. In preparing this Environmental Impact Assessment Report our organisation has relied on sound scientific principles. The report has four components-

- Part I: Biodiversity Report.
- Part II: Environment Impact Assessment Report.
- Part III: Environmental Management Plan.
- Part IV: Mangrove Management Plan.

The Report attempted to deal with, as far as possible, all the facets of conservation oriented development. The recommendations were crisp and clear, but of course conditional in the sense that Mumbai Metropolitan Region Development Authority would have to commit itself to follow certain conservational norms which would be considered as a great service from the Mumbai Metropolitan Region Development Authority as its social responsibility to the environment and society in general.

10. Wildlife Week Celebrations

1. Nagpur



The Wildlife Week is celebrated in the first week of October, all over the country. The Wildlife We Protection Foundation celebrated the Wildlife Week through awareness generation programs in schools and colleges. The Wildlife Week was celebrated at Nagpur by our Nagpur Branch Office staff through involvement of school

children and awards to the 'Outstanding Performers of the Joint Forest Management Committees' in the region.

Objectives

- To create awareness about cultures and presentation of the statistics and facts through the skit.
- To promote name of the Organisation
- To spread awareness about wildlife among school children.



Program Locations

- 1st October: 'Van sabhagruha', Seminary Hills, Nagpur.
- 4th October: Xaviers Auditorium, Hingna MIDC, Nagpur.
- 7th October: IMA Hall, North Ambazari Road, Nagpur



2. Mumbai

One day Inter collegiate competition based on WILD LIFE theme was conducted in the Institute of Science on the occasion of Wildlife Week.

Major two events were conducted

- Sustainable ecosystem models
- Wildlife advertisements

Other events were

- Photography Exhibition
- Predators crossword

Sustainable ecosystem models:

It was conducted as a group event. Each group consisted of 2 – 4 participants. They had to make a model (2D or 3D) describing sustainable innovations for ecosystems conservation (Sustainability and conservation). Emphasis was laid on practical/realistic and implemental aspect to conserve or develop ecosystems through sustainable ways. Time given for explanation was 5-7 min. Involvement of each was participant essential.

The topics were Agro-ecosystem, Coral reefs, Tropical forests ecosystem, Wetland ecosystem, Grassland ecosystem, Lake Ecosystem, Marine ecosystem, and Wildlife advertisements:

Wildlife Advertisement

This was also a group event (one group comprising 3-5members). Here the group had to advertise in front of audience about their themes. Emphasis was laid on wildlife conservation.

They were also allowed to create a set, or posters for their advertisements. It was a live advertisement on awareness. Participants had to act and present the theme. Time given for advertisement was 3-4 min. Involvement of each participant was necessary.

The topics were Wildlife for cosmetics, fashion and accessories, Wildlife for entertainment, Wildlife and we – tug of war, and Forest assassination

Photography Exhibition

Participants had to submit their photographs physically or by post at the institute of science before 30th Sept. The size limitation was not to be more than 12x10. One participant was allowed to send three photographs at a time. Each photo containing-

- Name (both common name and scientific name) with a suitable caption.
- Description (habitat, range, conservation status) – If applicable

Photos required were to be original without any kind of editing or effects.

The topics were Wildlife that swims, Wildlife that climb and dig, Mischievous wildlife, Wildlife extremes and Wildlife that crawl and run

The exhibition was on display for entire week (2nd – 8th Oct.) but the scrutiny and prize distribution was held on the 4th Oct.

Crossword Competition:

This was an individual event. The crossword was to be provided by us. Time given to solve this was half an hour. First two winners who successfully and correctly solved the crossword, were selected. Judging was based on timing in which crossword is solved.

This program was Co-Sponsored by the Media Partners- Newsband and the ' Nave Shahar Dailies' of Navi Mumbai.

3. Navi Mumbai

The Time allotted by schools was 2 hours, in which various activities and competition conducted. The message cloth was circulated in each school upon which students wrote beautiful quotes, sayings, slogans etc. related to nature conservation. Students gave tremendous response to this.

On 1st October,

The program was cancelled by the school C K Thakur High school (Marathi medium) due to some inevitable reason. The activities which were planned for this school were Autobiography, and my creative animal along with the Environmental detective's which was common in all schools.

On 4th October,

The program was conducted in IES, Navi Mumbai high school, Vashi. Nearly 150 students participated from this school.

- The programme was conducted from 2:30 to 4:30 noon.
- The clay modelling and best out of waste activity was conducted simultaneously, along with Debate competition.
- Nature games were also conducted, as the students were large in number and it was not possible to conduct event for all. Every activity took place under the banner of "Wildlife and We Protection Foundation".
- The events were conducted by two individuals, one volunteer: Mr. Anirudhha Patil and Ms. Pranoti Joshi.
- In spite of their exams coming very close, the students were well-prepared and proved themselves to be very knowledgeable.
- In all, the programme was successful, though there was one suggestion by the teachers, that they should be informed well in advance from next year, so that the competition can be arranged in a better way.

Mr. Ashok and Mr. Gore from Nave Shahar were present for the entire event. They also covered this event in the following day's newspaper.

On 5th October

The program was conducted in Sainath Hindi high school, Vashi. Nearly 220 students participated from this school.

- The programme was conducted from 8:00 – 10:00 a.m.
- Due to some miscommunication between principal and teachers, the program was modified, and an half an hour interactive session was conducted for the students.
- The clay modelling and best out of waste activity was conducted.
- A volunteer with Ms Pranoti Joshi named Ms Rasika Joshi was extremely helpful.



The rescheduled program was conducted in C K Thakur High School (English medium), Vashi

Nearly 220 students participated from this school.

- The programme was conducted from 10:30 – 12:30 p.m.
- Due to some miscommunication between principal and teachers, the program was modified to a great extent. Though only four events were decided to this school, the school participated in all the 10 events. Hence we conducted 8 events in two hours.



an amazing initiative taken by the school.

- As the winners were in large number it was decided to give only one prize for each event.

- In spite of the earlier miscommunication, the school gave a great co-operation and the management requested us to take such activities at a large scale for next year.

Institute of Science, Mumbai

On 7th of Oct



One day intercollegiate competitions were held for graduates and post graduates. But the response was mild due to semester exams.

The events conducted were Photography competition, Sustainable ecosystem models and crossword

competition.

Mr. Suresh Thorat was the chief guest for the event. Dr. Amol Patwardhan was the judge for Photography and Sustainable ecosystem model competitions. He gave some important tips and guidance for the students



11. One day workshop on Detection of Wildlife Crime

Wildlife crime is contravening any domestic or international law concerning wildlife, be it by poaching for food or fun or by killing to supply an illegal wildlife trade or by possessing illegal material or smuggling it across borders. Intelligence is information collected, collated, analyzed and disseminated, in an effort to anticipate, prevent or monitor criminal activity. From sporadic incidents of poaching (mainly for meat),



wildlife crimes have now grown into organized criminal activity having international ramifications. Collection of intelligence about such organized criminal networks, and their activities and collation of such information on a real time basis is the need of the hour to combat wildlife crimes effectively. It is extremely essential that the staff that collects information about wildlife crime

is properly trained to do the task as untrained or less informed staff can end up destroying the evidence rather than preserving it. To impart information on importance of proper collection of evidence, a one day workshop was conducted by the organisation for the staff of Sanjay Gandhi National Park.



Our Core Team



Dr. Shivaji Chavan – Team Leader: An academician, trainer and researcher in the Field of Forestry, Wildlife and Environment and allied Field. His expertise lies in Wildlife, Environmental Conservation, Environmental Economics, Carbon Budgeting, Applications of Modern Tools and Technology in Forest, Wildlife, Environment and allied fields



Mr. Ranjeet Sahu: RS- GIS Expert
His expertise lies in Technology Development, and Applications, GIS, Remote Sensing and Allied Technologies and Networking

Mr Rajneesh Bajpai: RS-GIS Technician

GIS and RS Data Preparation
Technical Associate, GIS with Technology Applications,



Mr. Ishteyaque Patel

Field and Capacity Building Executive

He is highly experienced and is adept at carrying out various activities

related to field of Forest and Wildlife



Ms Kalpana Chinchkede

An academician and researcher in the Wildlife. Has a good knack in imparting nature based education to children



Ms Pranoti Joshi: Environmental planning consultant



A postgraduate in Environmental Sciences, with hands on experience of Nature and wildlife interpretation and sustainable development, environmental clearances and environmental management

Wildlife and We Protection Foundation has put its best foot forward this year and has contributed to the field of conservation. Some of the projects were on the basis of *gratis* and in some with a payment to meet the organisations basic needs. The special feature of the organisation is that it has not accepted any donations since its inception and has managed to survive on the resources generated as a result of providing services.